

FITTING SCHEDULE

| MK. SIZE | SERVICE | ORIE. ELEV. | DILLING | PRESSURE RATING | PIPE DIA. | FLG. LEN. | WALL THK. | FLG. THK. | HUB LEN. | HUB BOLT CIRC. | BOLT HOLES |
|----------|----------------|-------------|---------|-----------------|-----------|-----------|-----------|-----------|----------|----------------|------------|
| A | 4" DRAIN | 340° | 6" | | | | | | | | |
| B | 4" PIPE LINE | 180° | 14" | | | | | | | | |
| C | 4" OVERFLOW | 225° | 146" | | | | | | | | |
| D | 4" OVERFLOW | 135° | 146" | | | | | | | | |
| E | 4" FILL | 160° | TOP | | | | | | | | |
| F | 4" VENT | 200° | TOP | | | | | | | | |
| G | 4" AUXILIARY | 0° | TOP | | | | | | | | |
| H | 8" THIEF HATCH | 180° | TOP | | | | | | | | |
| I | 24" MANWAY | 0° | 2" | | | | | | | | |
| J | | | | | | | | | | | |
| K | | | | | | | | | | | |
| L | | | | | | | | | | | |
| M | | | | | | | | | | | |
| N | | | | | | | | | | | |

RESIN SPECIFICATION

| | |
|-----------------|-----------------|
| JOB | GENERAL PURPOSE |
| STRUCTURAL WALL | TAN GEL COAT |
| EXTERIOR COAT | |

LAMINATION SYMBOLS AND THICKNESS

| SYMBOL | DESCRIPTION | THICKNESS |
|--------|--|-----------------|
| V | ONE (1) LAYER OF VEIL | 0.01" |
| C | ONE (1) LAYER OF COAT | 0.01" |
| M | ONE (1) LAYER OF 156 STANDARD | 0.035" |
| W | ONE (1) LAYER OF 200 STANDARD | 0.035" |
| U | ONE (1) LAYER OF 225 STANDARD | 0.035" |
| U | ONE (1) LAYER OF 146 STANDARD | 0.035" |
| CH | ONE (1) LAYER OF COMPRESSED STANDARD (NO COUP) | 0.035" TO 0.04" |

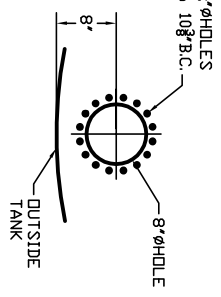
- 1) 10" DIAMETER X 15' SHELL HIGH TANK 210 BBL
- 2) 12" DIAMETER X 15' SHELL HIGH TANK 300 BBL
- 3) 156" DIAMETER X 15' SHELL HIGH TANK 500 BBL
- 4) ALL TANKS HAVE SAME LAYOUT
- 5) NONSTANDARD 210 BBL TANKS ARE ALSO AVAILABLE FOR:
 - A) SPECIFIC GRAVITY TO 2.1
 - B) OTHER CHEMICALS
 - C) OTHER OPERATING TEMPERATURES
 - D) WHEN ORDERING NONSTANDARD 210 BBL TANKS PLEASE PROVIDE FOLLOWING INFORMATION:
 - A) CHEMICAL
 - B) CHEMICAL CONCENTRATION
 - C) SPECIFIC GRAVITY
 - D) OPERATING TEMPERATURE
 - E) INSIDE- OUTSIDE USE

- 1) ALL SEVEN (7) COUPLINGS ARE 4"
- 2) STANDARD DESIGN FOR APPLICATION IN WHICH SPECIFIC GRAVITY DOES NOT EXCEED 1.2
- 3) COMPLEMENTARY ENVIRONMENT INCLUDE
 - A) CRUDE OIL
 - B) SALT WATER BRINE
- 4) STANDARD DESIGN IS FOR AMBIENT TEMPERATURE CONDITIONS
- 5) ALL SEVEN (7) COUPLINGS CAN ALSO BE REPLACED WITH 4" 150 PSI FLANGES

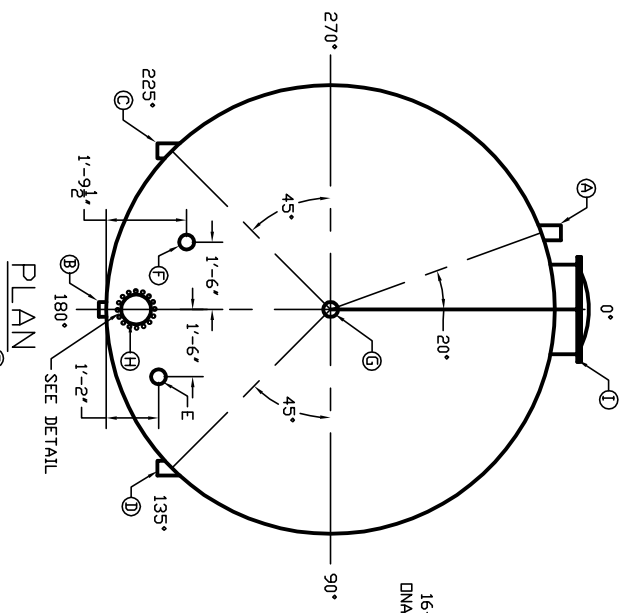
UNLESS OTHERWISE NOTED:

| ITEM | QTY | DESCRIPTION | MATERIAL |
|------------|-----|---------------------|----------|
| V | | | |
| U | | | |
| T | | | |
| S | | | |
| R | | | |
| Q | | | |
| P | | | |
| O | | | |
| N | | | |
| M | | | |
| L | | | |
| K | | | |
| J | | | |
| I | | | |
| H | | | |
| G | | | |
| F | | | |
| E | | | |
| D | 4 | LIFTING LUGS | FRP |
| C | 1 | 8" THIEF HATCH | ALM |
| B | 1 | 24" MANWAY WITH LID | FRP |
| A | 7 | 4" COUPLINGS | FRP |
| PARTS LIST | | | |

THIEF HATCH DETAIL



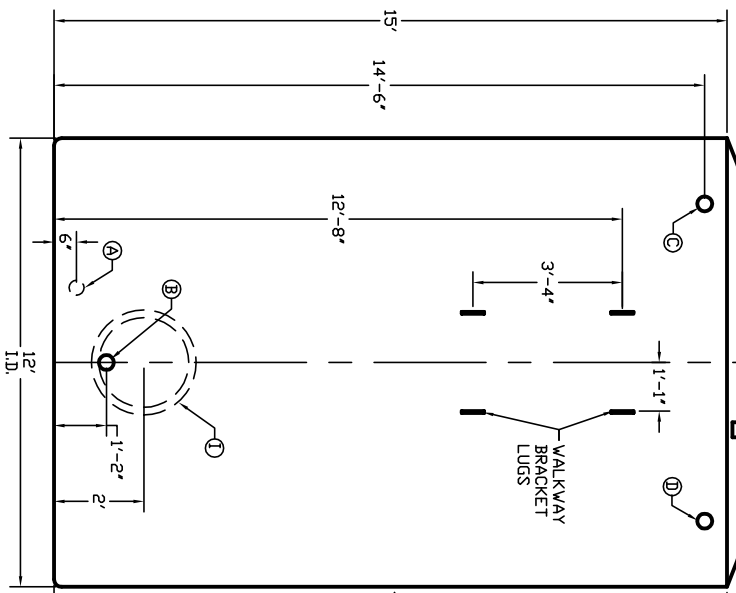
PLAN



LAYERS
2 CHOP 100 MILLS
1(WR)
5(CH-FW)
1(CH)

LAYERS
2 CHOP 100 MILLS
2(WR)
5(CH-FW)
1(CH)

ELEVATION



| | | |
|----------------|--------------------|-------------|
| CUSTOMER | DESIGN INFORMATION | CUSTOMER |
| PROJECT NUMBER | PRESSURE RATING | ATMOSPHERIC |
| SCALE | PIPE DIA. | 1.2 |
| DRAWING # | FLG. LEN. | 300 BBL |
| DATE | WALL THK. | |
| REV. | FLG. THK. | |
| | HUB LEN. | |
| | HUB BOLT CIRC. | |
| | BOLT HOLES | |