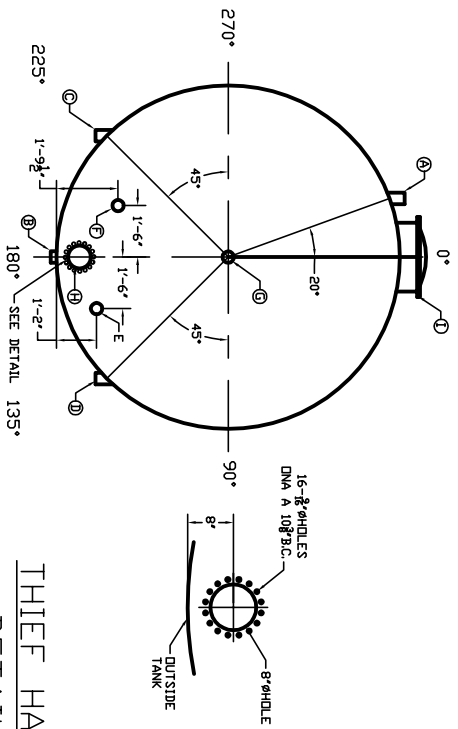


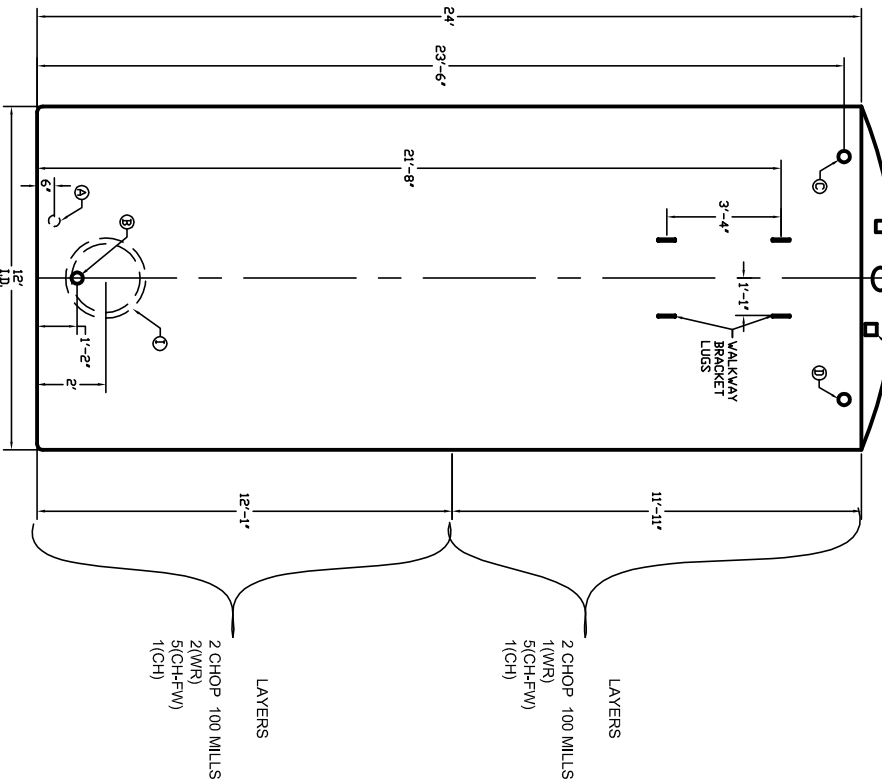
FITTING SCHEDULE

MK. SIZE	SERVICE	ORIE. ELEV.	DRILLING	PRESSURE RATING	PIPE DIA.	FLG. LEN.	WALL THK.	FLG. THK.	HUB LEN.	HUB CIRC.	BOLT HOLES
A	4" DRAIN	340°	6"								
B	4" PIPE LINE	180°	14"								
C	4" OVERFLOW	225°	146"								
D	4" OVERFLOW	135°	146"								
E	4" FILL	160°	TOP								
F	4" VENT	200°	TOP								
G	4" AUXILIARY	0°	TOP								
H	8" THIEF HATCH	180°	TOP								
I	24" MANWAY	0°	2"								
J											
K											
L											
M											
N											



PLAN

THIEF HATCH
DETAIL



ELEVATION

ITEM	QTY	DESCRIPTION	MATERIAL
V			
U			
T			
S			
R			
Q			
P			
O			
N			
M			
L			
K			
J			
I			
H			
G			
F			
E			
D	4	LIFTING LUGS	FRP
C	1	8" THIEF HATCH	ALM
B	1	24" MANWAY WITH LID	FRP
A	7	4" COUPLINGS	FRP

DESIGN INFORMATION

PRESSER: ATMOSPHERIC CUSTOMER

TEMP: AMB. SPECIFIC GRAVITY: 1.2 TANK SPEC. CAPACITY: 500 BBL

WIND SPEED: SEISMIC ZONE: WEIGHT EMPTY: WEIGHT FULL:

SERVICE: CRUDE OIL CONSECUTION INFORMATION: 12" DIA X 24" HIGH

EQUIPMENT DESIGNATION: LNER RESIN DIMENSIONS: GP

CUSTOMER PO#: LNER THICK: MATT 100 MILLS

CUSTOMER EOH: LNER REINF: GP

WHO #: RESIN: GP

DATE OF MFG: EXT SURFACE: GREEN

UNLESS OTHERWISE NOTED:

- 1) ALL SEVEN (7) COUPLINGS ARE 4"
- 2) STANDARD DESIGN FOR APPLICATION IN WHICH SPECIFIC GRAVITY DOES NOT EXCEED 1.2
- 3) COMPLEMENTARY ENVIRONMENT INCLUDE:
 - A) CRUDE OIL
 - B) SALT WATER BRINE
- 4) STANDARD DESIGN IS FOR AMBIENT TEMPERATURE CONDITIONS
- 5) ALL SEVEN (7) COUPLINGS CAN ALSO BE REPLACED WITH 4" 150 PSI FLANGES

CUSTOM COMPOSITES

1018 E. MADISON OKLAHOMA CITY, OK 73111

Phone: 405-424-2550 Fax: 405-424-2556

CUSTOMER: DRAWING DATE:

DESIGNED BY: DRAWING FILE:

PROJECT MANAGER: SCALE:

DRAWING # REV:

ICB	GENERAL PURPOSE
STRUCTURAL WALL	TAN GEL COAT
EXTERIOR COAT	

SYMBOL	DESCRIPTION	THICKNESS
V	ONE (1) LAYER OF VEE	0.01"
C	ONE (1) LAYER OF CHEMICAL	0.01"
M	ONE (1) LAYER OF 100% 2" COMPREG STANDARD	0.035"
W	ONE (1) LAYER OF 100% 2" COMPREG STANDARD	0.035"
WV	ONE (1) LAYER OF 100% 2" COMPREG STANDARD	0.035"
U	ONE (1) LAYER OF 100% 2" COMPREG STANDARD	0.035"
CH	ONE (1) LAYER OF COMPREG STANDARD (CH) NO COUG	0.03" TO 0.4"

- 1) 10" DIAMETER X 15" SHELL HIGH TANK 210 BBL
- 2) 12" DIAMETER X 15" SHELL HIGH TANK 300 BBL
- 3) 156" DIAMETER X 15" SHELL HIGH TANK 500 BBL
- 4) ALL TANKS HAVE SAME LAYOUT
- 5) NONSTANDARD 210 BBL TANKS ARE ALSO AVAILABLE FOR:
 - A) SPECIFIC GRAVITY TO 2.1
 - B) OTHER CHEMICALS
 - C) OTHER OPERATING TEMPERATURES
 - 6) WHEN ORDERING NONSTANDARD 210 BBL TANKS PLEASE PROVIDE FOLLOWING INFORMATION:
 - A) CHEMICAL
 - B) CHEMICAL CONCENTRATION
 - C) SPECIFIC GRAVITY
 - D) OPERATING TEMPERATURE
 - E) INSIDE- OUTSIDE USE

LAYERS

2 CHOP 100 MILLS
1(WR)
5(CH-FW)
1(CH)

LAYERS

2 CHOP 100 MILLS
2(WR)
5(CH-FW)
1(CH)